

# ASME B16.5

Flanges

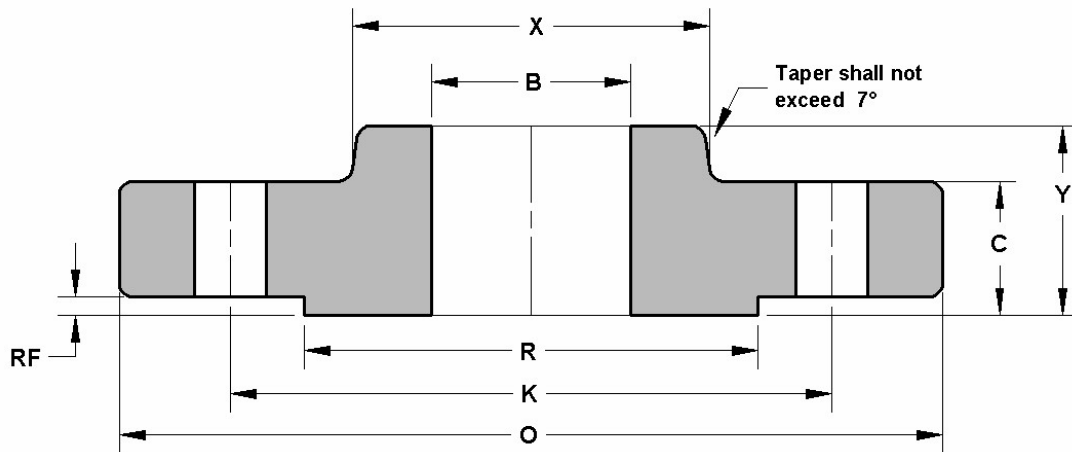
**ASHBY SCOTT**

PIPE SYSTEMS



# Slip On Flanges

## 150 Lb



Dimensions are in mm

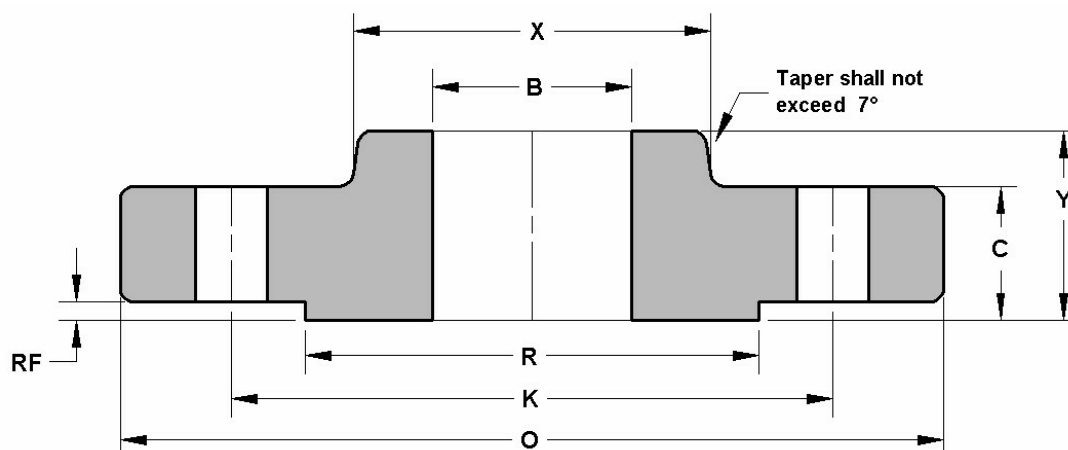
DN	O	C	X	K	Y	RF	R	B	Ø HOLES	NO. HOLES	Kg. APPROX
1/2	88.9	11.1	30.2	60.4	15.7	1.5	35.0	22.3	15.7	4	0.4
3/4	98.5	12.7	38.1	69.8	15.7	1.5	42.9	27.6	15.7	4	0.7
1"	107.9	14.2	49.2	79.2	17.5	1.5	50.8	34.5	15.7	4	0.8
1"1/4	117.3	15.7	58.6	88.9	20.5	1.5	63.5	43.1	15.7	4	1.1
1"1/2	127.0	17.5	65.0	98.5	22.3	1.5	73.1	49.5	15.7	4	1.4
2"	152.4	19.0	77.7	120.6	25.4	1.5	91.9	61.9	19.0	4	2.2
2"1/2	177.8	22.3	90.4	139.7	28.4	1.5	104.6	74.6	19.0	4	3.6
3"	190.5	23.8	107.9	152.4	30.2	1.5	127.0	90.6	19.0	4	4.1
4"	228.6	23.8	134.8	190.5	33.2	1.5	157.2	116.0	19.0	8	5.6
5"	254.0	23.8	163.5	215.9	36.5	1.5	185.6	143.7	22.3	8	6.3
6"	279.4	25.4	192.0	241.3	39.6	1.5	215.9	170.6	22.3	8	7.5
8"	342.9	28.4	246.1	298.4	44.4	1.5	269.7	221.4	22.3	8	12.6
10"	406.4	30.2	304.8	361.9	49.2	1.5	323.8	276.3	25.4	12	18.5
12"	482.6	31.7	365.2	431.8	55.6	1.5	381.0	327.1	25.4	12	28.0
14"	533.4	35.0	400.0	476.2	57.1	1.5	412.7	359.1	28.4	12	36.0
16"	596.9	36.5	457.2	539.7	63.5	1.5	469.9	410.4	28.4	16	46.0
18"	635.0	39.6	504.9	577.8	68.3	1.5	533.4	461.7	31.7	16	50.0
20"	698.5	42.9	558.8	635.0	73.1	1.5	584.2	513.0	31.7	20	64.0
24"	812.8	47.7	663.4	749.3	82.5	1.5	692.1	615.9	35.0	20	89.0

30" and 36" also available.  
Contact the sales team for more information.



# Slip On Flanges

## 300 Lb



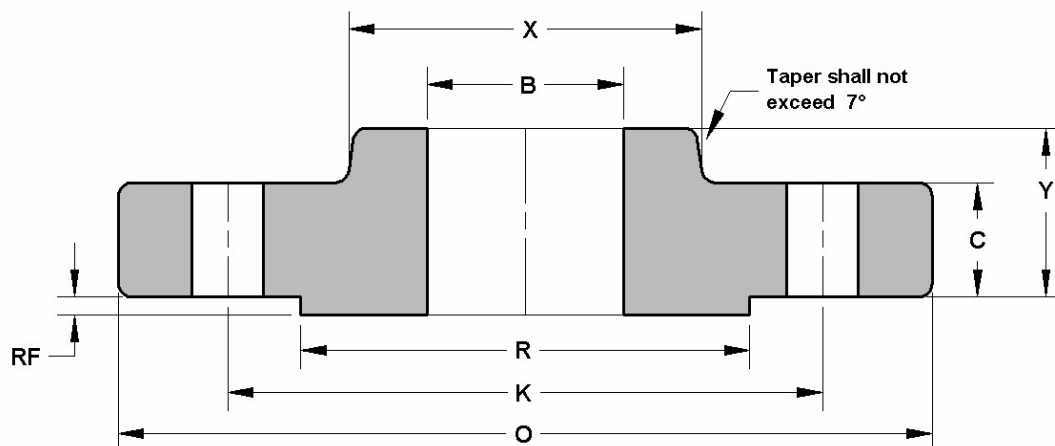
Dimensions are in mm.

DN	O	C	X	K	Y	RF	R	B	Ø HOLES	N. HOLES	Kg. APPROX
1/2	95.2	14.2	38.1	66.5	22.3	1.5	35.0	22.3	15.7	4	0.7
3/4	117.3	15.7	47.7	82.5	25.4	1.5	42.9	27.6	19.0	4	1.1
1"	123.9	17.5	53.8	88.9	26.9	1.5	50.8	34.5	19.0	4	1.4
1"1/4	133.3	19.0	63.5	98.5	26.9	1.5	63.5	43.1	19.0	4	1.8
1"1/2	155.4	20.5	69.8	114.3	30.2	1.5	73.1	49.5	22.3	4	2.6
2"	165.1	22.3	84.0	127.0	33.2	1.5	91.9	61.9	19.0	8	3.4
2"1/2	190.5	25.4	100.0	149.3	38.1	1.5	104.6	74.6	22.3	8	4.4
3"	209.5	28.4	117.3	168.1	42.9	1.5	127.0	90.6	22.3	8	6.1
4"	254.0	31.7	146.0	200.1	47.7	1.5	157.2	116.0	22.3	8	10.1
5"	279.4	35.0	177.8	234.9	50.8	1.5	185.6	143.7	22.3	8	12.5
6"	317.5	36.5	206.2	269.7	52.3	1.5	215.9	170.6	22.3	12	14.1
8"	381.0	41.1	260.3	330.2	61.9	1.5	269.7	221.4	25.4	12	24.6
10"	444.5	47.7	320.5	387.3	66.5	1.5	323.8	276.3	28.4	16	37.1
12"	520.7	50.8	374.6	450.8	73.1	1.5	381.0	327.1	31.7	16	50.0
14"	584.2	53.8	425.4	514.3	76.2	1.5	412.7	359.1	31.7	20	70.0
16"	647.7	57.1	482.6	571.5	82.5	1.5	469.9	410.4	35.0	20	90.0
18"	711.2	60.4	533.4	628.6	88.9	1.5	533.4	461.7	35.0	24	112.0
20"	774.7	63.5	587.2	685.8	95.2	1.5	584.2	513.0	35.0	24	133.0
24"	914.4	69.8	701.5	812.8	106.4	1.5	692.1	615.9	41.1	24	208.0

30" and 36" also available.  
Contact the sales team for more information.

# Slip On Flanges

## 600 Lb



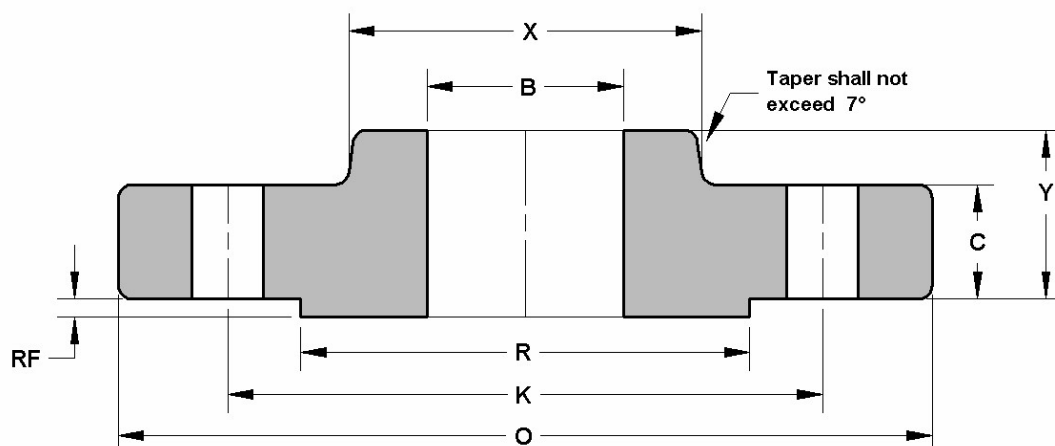
Dimensions are in mm.

DN	O	C	X	K	Y	RF	R	B	Ø HOLES	NO. HOLES	Kg. APPROX
1/2	95.2	14.2	38.1	66.5	22.3	6.3	35.0	22.3	15.7	4	0.8
3/4	117.3	15.7	47.7	82.5	25.4	6.3	42.9	27.6	19.0	4	1.4
1"	123.9	17.5	53.8	88.9	26.9	6.3	50.8	34.5	19.0	4	1.6
1"1/4	133.3	20.5	63.5	98.5	28.4	6.3	63.5	43.1	19.0	4	2.1
1"1/2	155.4	22.3	69.8	114.3	31.7	6.3	73.1	49.5	22.3	4	3.1
2"	165.1	25.4	84.0	127.0	36.5	6.3	91.9	61.9	19.0	8	3.7
2"1/2	190.5	28.4	100.0	149.3	41.1	6.3	104.6	74.6	22.3	8	5.4
3"	209.5	31.7	117.3	168.1	45.9	6.3	127.0	90.6	22.3	8	7.3
4"	273.0	38.1	152.4	215.9	53.8	6.3	157.2	116.0	25.4	8	15.8
5"	330.2	44.4	188.9	266.7	60.4	6.3	185.6	143.7	28.4	8	24.5
6"	355.6	47.7	222.2	292.1	66.5	6.3	215.9	170.6	28.4	12	29.5
8"	419.1	55.6	273.0	349.2	76.2	6.3	269.7	221.4	31.7	12	43.0
10"	508.0	63.5	342.9	431.8	85.8	6.3	323.8	276.3	35.0	16	70.0
12"	558.8	66.5	400.0	488.9	91.9	6.3	381.0	327.1	35.0	20	86.0
14"	603.2	69.8	431.8	527.0	93.7	6.3	412.7	359.1	38.1	20	100.0
16"	685.8	76.2	495.3	603.2	106.4	6.3	469.9	410.4	41.1	20	142.0
18"	742.9	82.5	546.1	654.0	117.3	6.3	533.4	461.7	44.4	20	175.0
20"	812.8	88.9	609.6	723.9	127.0	6.3	584.2	513.0	44.4	24	232.0
24"	939.8	101.6	717.5	838.2	139.7	6.3	692.1	615.9	50.8	24	330.0

30" and 36" also available.  
Contact the sales team for more information.

# Slip On Flanges

## 900 Lb



Dimensions are in mm.

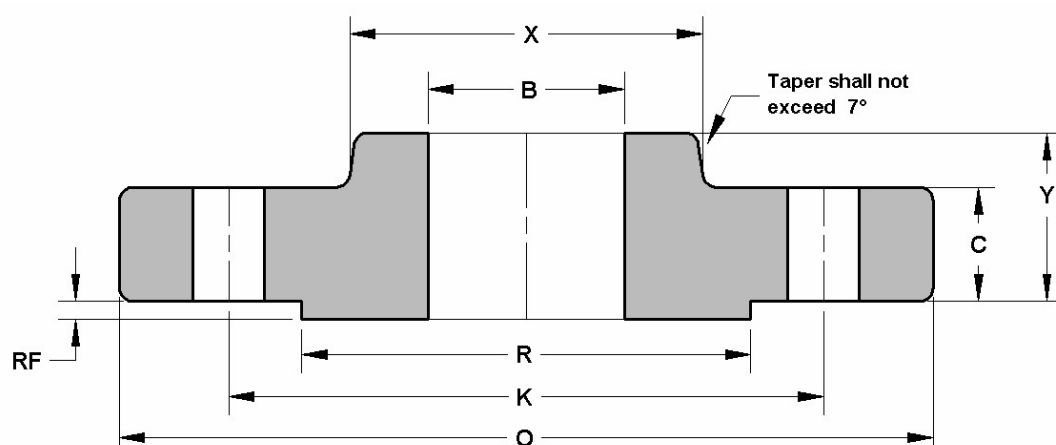
DN	O	C	X	K	Y	RF	R	B	Ø HOLES	NO. HOLES	Kg. APPROX
1/2											
3/4											
1"											
1"1/4											
1"1/2											
2"											
2"1/2											
3"	241.3	38.1	127.0	190.5	53.8	6.3	127.0	90.6	25.4	8	11.6
4"	292.1	44.4	158.7	234.9	69.8	6.3	157.2	116.0	31.7	8	19.8
5"	349.2	50.8	190.5	279.4	79.2	6.3	185.6	143.7	35.0	8	32.0
6"	381.0	55.6	234.9	317.5	85.8	6.3	215.9	170.6	31.7	12	41.2
8"	469.9	63.5	298.4	393.7	101.6	6.3	269.7	221.4	38.1	12	78.0
10"	546.1	69.8	368.3	469.9	107.9	6.3	323.8	276.3	38.1	16	110.0
12"	609.6	79.2	419.1	533.4	117.3	6.3	381.0	327.1	38.1	20	149.0
14"	641.3	85.8	450.8	558.8	130.0	6.3	412.7	359.1	41.1	20	181.0
16"	704.8	88.9	508.0	615.9	133.3	6.3	469.9	410.4	44.4	20	194.0
18"	787.4	101.6	565.1	685.8	152.4	6.3	533.4	461.7	50.8	20	274.0
20"	857.2	107.9	622.3	749.3	158.7	6.3	584.2	513.0	53.8	20	332.0
24"	1041.4	139.7	749.3	901.7	203.2	6.3	692.1	615.9	66.5	20	637.0

Use 1500 Lbs dimensions for these sizes.

30" and 36" also available.  
Contact the sales team for more information.

# Slip On Flanges

## 1500 Lb



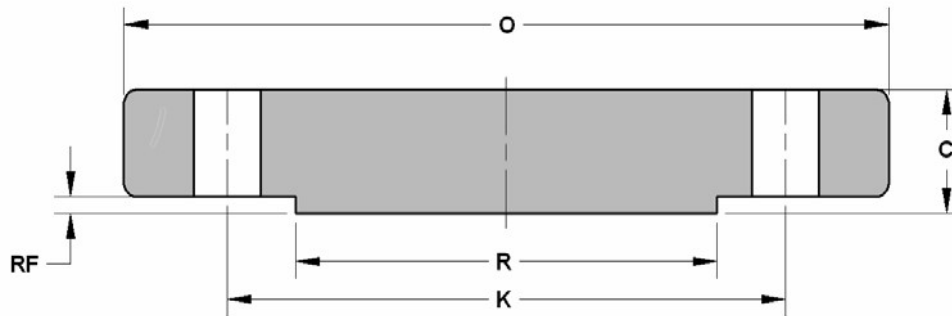
Dimensions are in mm.

DN	O	C	X	K	Y	RF	R	B	Ø HOLES	NO. HOLES	Kg. APPROX
1/2	120.6	22.3	38.1	82.5	31.7	6.3	35.0	22.3	22.3	4	1.7
3/4	130.0	25.4	44.4	88.9	35.0	6.3	42.9	27.6	22.3	4	2.3
1"	149.3	28.4	52.3	101.6	41.1	6.3	50.8	34.5	25.4	4	3.4
1"1/4	158.7	28.4	63.5	111.2	41.1	6.3	63.5	43.1	25.4	4	3.9
1"1/2	177.8	31.7	69.8	123.9	44.4	6.3	73.1	49.5	28.4	4	5.4
2"	215.9	38.1	104.6	165.1	57.1	6.3	91.9	61.9	25.4	8	9.8
2"1/2	244.3	41.1	123.9	190.5	63.5	6.3	104.6	74.6	28.4	8	13.7
3"	266.7	47.7	133.3	203.2		6.3	127.0		31.7	8	18.0
4"	311.1	53.8	162.0	241.3		6.3	157.2		35.0	8	27.8
5"	374.6	73.1	196.8	292.1		6.3	185.6		41.1	8	52.0
6"	393.7	82.5	228.6	317.5		6.3	215.9		38.1	12	61.0
8"	482.6	91.9	292.1	393.7		6.3	269.7		44.4	12	104.0
10"	584.2	107.9	368.3	482.6		6.3	323.8		50.8	12	175.0
12"	673.1	123.9	450.8	571.5		6.3	381.0		53.8	16	264.0
14"	749.3	133.3	495.3	635.0		6.3	412.7		60.4	16	
16"	825.5	146.0	552.4	704.8		6.3	469.9		66.5	16	
18"	914.4	162.0	596.9	774.7		6.3	533.4		73.1	16	
20"	984.2	177.8	641.3	831.8		6.3	584.2		79.2	16	
24"	1168.4	203.2	762.0	990.6		6.3	692.1		91.9	16	

30" and 36" also available.  
Contact the sales team for more information.

# Blind Flanges

## 150 Lb



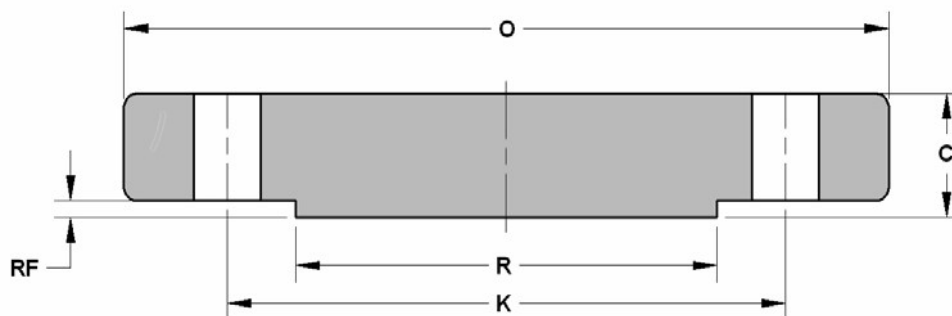
Dimensions are in mm.

DN	O	C	K	RF	R	Ø HOLES	NO. HOLES	Kg. APPROX
1/2	88.9	11.1	60.4	1.5	35.0	15.7	4	0.4
3/4	98.5	12.7	69.8	1.5	42.9	15.7	4	0.7
1"	107.9	14.2	79.2	1.5	50.8	15.7	4	0.9
1"1/4	117.3	15.7	88.9	1.5	63.5	15.7	4	1.3
1"1/2	127.0	17.5	98.5	1.5	73.1	15.7	4	1.6
2"	152.4	19.0	120.6	1.5	91.9	19.0	4	2.6
2"1/2	177.8	22.3	139.7	1.5	104.6	19.0	4	4.1
3"	190.5	23.8	152.4	1.5	127.0	19.0	4	5.0
4"	228.6	23.8	190.5	1.5	157.2	19.0	8	7.1
5"	254.0	23.8	215.9	1.5	185.6	22.3	8	9.0
6"	279.4	25.4	241.3	1.5	215.9	22.3	8	11.8
8"	342.9	28.4	298.4	1.5	269.7	22.3	8	21.0
10"	406.4	30.2	361.9	1.5	323.8	25.4	12	30.0
12"	482.6	31.7	431.8	1.5	381.0	25.4	12	45.0
14"	533.4	35.0	476.2	1.5	412.7	28.4	12	59.0
16"	596.9	36.5	539.7	1.5	469.9	28.4	16	79.0
18"	635.0	39.6	577.8	1.5	533.4	31.7	16	97.0
20"	698.5	42.9	635.0	1.5	584.2	31.7	20	124.0
24"	812.8	47.7	749.3	1.5	692.1	35.0	20	188.0

30" and 36" also available.  
Contact the sales team for more information.

# Blind Flanges

## 300 Lb

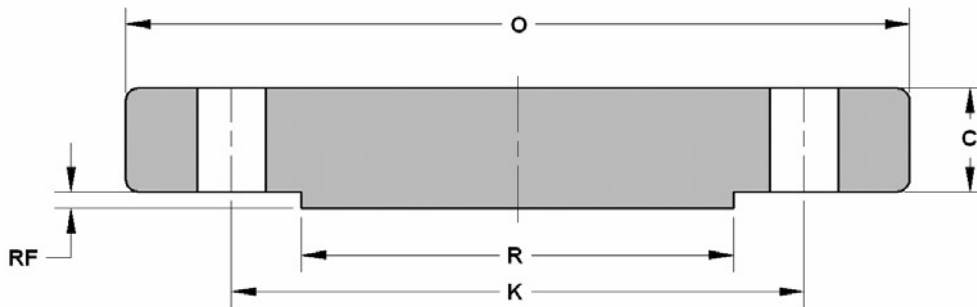


Dimensions are in mm.

DN	O	C	K	RF	R	Ø HOLES	N. HOLES	Kg. APPROX
1/2	95.2	14.2	66.5	1.5	35.0	15.7	4	0.7
3/4	117.3	15.7	82.5	1.5	42.9	19.0	4	1.2
1"	123.9	17.5	88.9	1.5	50.8	19.0	4	1.5
1"1/4	133.3	19.0	98.5	1.5	63.5	19.0	4	2.0
1"1/2	155.4	20.5	114.3	1.5	73.1	22.3	4	2.9
2"	165.1	22.3	127.0	1.5	91.9	19.0	8	3.4
2"1/2	190.5	25.4	149.3	1.5	104.6	22.3	8	5.1
3"	209.5	28.4	168.1	1.5	127.0	22.3	8	7.0
4"	254.0	31.7	200.1	1.5	157.2	22.3	8	11.8
5"	279.4	35.0	234.9	1.5	185.6	22.3	8	15.5
6"	317.4	36.5	269.7	1.5	215.9	22.3	12	21.3
8"	381.0	41.1	330.2	1.5	269.7	25.4	12	35.2
10"	444.5	47.7	387.3	1.5	323.8	28.4	16	57.0
12"	520.7	50.8	450.8	1.5	381.0	31.7	16	82.0
14"	584.2	53.8	514.3	1.5	412.7	31.7	20	106.0
16"	647.7	57.1	571.5	1.5	469.9	35.0	20	140.0
18"	711.2	60.4	628.6	1.5	533.4	35.0	24	178.0
20"	774.7	63.5	685.8	1.5	584.2	35.0	24	223.0
24"	914.4	69.8	812.8	1.5	692.1	41.1	24	345.0

30" and 36" also available.  
Contact the sales team for more information.

# Blind Flanges 600 Lb



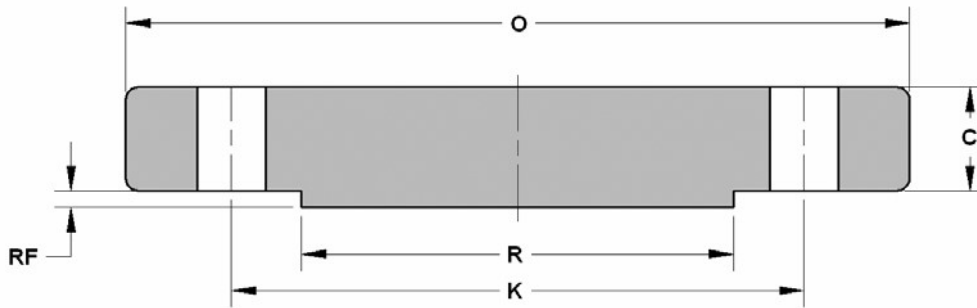
Dimensions are in mm.

DN	O	C	K	RF	R	Ø HOLES	NO . HOLES	Kg. APPROX
1/2	95.2	14.2	66.5	6.3	35.0	15.7	4	0.7
3/4	117.3	15.7	82.5	6.3	42.9	19.0	4	1.2
1"	123.9	17.5	88.9	6.3	50.8	19.0	4	1.5
1"1/4	133.3	20.5	98.5	6.3	63.5	19.0	4	2.0
1"1/2	155.4	22.3	114.3	6.3	73.1	22.3	4	3.2
2"	165.1	25.4	127.0	6.3	91.9	19.0	8	4.3
2"1/2	190.5	28.4	149.3	6.3	104.6	22.3	8	6.0
3"	209.5	31.7	168.1	6.3	127.0	22.3	8	8.0
4"	273.0	38.1	215.9	6.3	157.2	25.4	8	18.0
5"	330.2	44.4	266.7	6.3	185.6	28.4	8	28.5
6"	355.6	47.7	292.1	6.3	215.9	28.4	12	35.5
8"	419.1	55.6	349.2	6.3	269.7	31.7	12	58.0
10"	508.0	63.5	431.8	6.3	323.8	35.0	16	98.0
12"	558.8	66.5	488.9	6.3	381.0	35.0	20	125.0
14"	603.2	69.8	527.0	6.3	412.7	38.1	20	151.0
16"	685.8	76.2	603.2	6.3	469.9	41.1	20	215.0
18"	742.9	82.5	654.0	6.3	533.4	44.4	20	287.0
20"	812.8	88.9	723.9	6.3	584.2	44.4	24	366.0
24"	939.8	101.6	838.2	6.3	692.1	50.8	24	532.0

30" and 36" also available.  
Contact the sales team for more information.

# Blind Flanges

## 900 Lb



Dimensions are in mm.

DN	O	C	K	RF	R	Ø HOLES	NO . HOLES	Kg. APPROX
1/2								
3/4								
1"								
1" 1/4								
1" 1/2								
2"								
2" 1/2								
3"	241.3	38.1	190.5	6.3	127.0	25.4	8	13.1
4"	292.1	44.4	234.9	6.3	157.2	31.7	8	22.1
5"	349.2	50.8	279.4	6.3	185.6	35.0	8	36.5
6"	381.0	55.6	317.5	6.3	215.9	31.7	12	47.4
8"	469.9	63.5	393.7	6.3	269.7	38.1	12	82.5
10"	546.1	69.8	469.9	6.3	323.8	38.1	16	123.0
12"	609.6	79.2	533.4	6.3	381.0	38.1	20	174.0
14"	641.3	85.8	558.8	6.3	412.7	41.1	20	213.0
16"	704.8	88.9	615.9	6.3	469.9	44.4	20	280.0
18"	787.4	101.6	685.8	6.3	533.4	50.8	20	400.0
20"	857.2	107.9	749.3	6.3	584.2	53.8	20	503.0
24"	1041.4	139.7	901.7	6.3	692.1	66.5	20	950.0

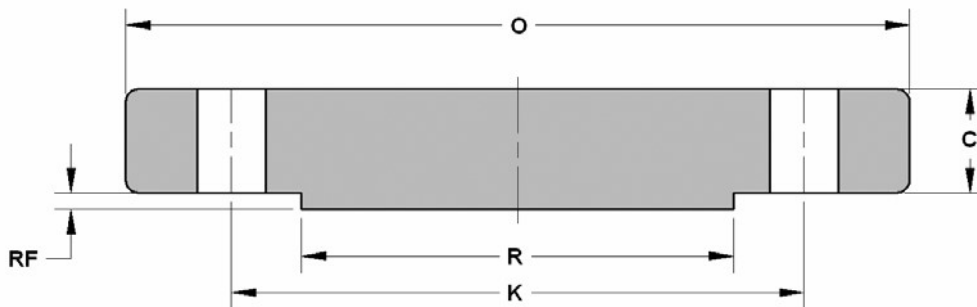
Use 1500 Lbs dimensions for these sizes.

30" and 36" also available.  
Contact the sales team for more information.



# Blind Flanges

## 1500 Lb



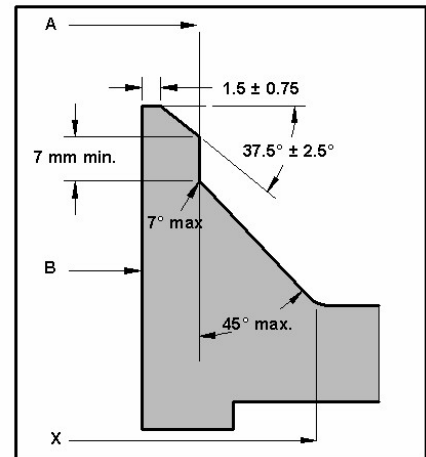
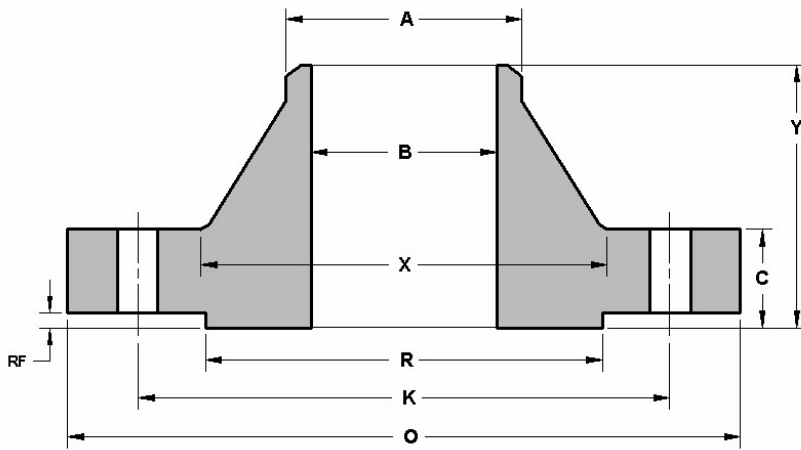
Dimensions are in mm.

DN	O	C	K	RF	R	Ø HOLES	NO - HOLES	Kg. APPROX
1/2	120.6	22.3	82.5	6.3	35.0	22.3	4	1.8
3/4	130.0	25.4	88.9	6.3	42.9	22.3	4	2.4
1"	149.3	28.4	101.6	6.3	50.8	25.4	4	3.6
1"1/4	158.7	28.4	111.2	6.3	63.5	25.4	4	4.1
1"1/2	177.8	31.7	123.9	6.3	73.1	28.4	4	5.8
2"	215.9	38.1	165.1	6.3	91.9	25.4	8	10.1
2"1/2	244.3	41.1	190.5	6.3	104.6	28.4	8	14.0
3"	266.7	47.7	203.2	6.3	127.0	31.7	8	19.0
4"	311.1	53.8	241.3	6.3	157.2	35.0	8	30.0
5"	374.6	73.1	292.1	6.3	185.6	41.1	8	58.0
6"	393.7	82.5	317.5	6.3	215.9	38.1	12	72.0
8"	482.6	91.9	393.7	6.3	269.7	44.4	12	122.0
10"	584.2	107.9	482.6	6.3	323.8	50.8	12	210.0
12"	673.1	123.9	571.5	6.3	381.0	53.8	16	315.0
14"	749.3	133.3	635.0	6.3	412.7	60.4	16	423.0
16"	825.5	146.0	704.8	6.3	469.9	66.5	16	590.0
18"	914.4	162.0	774.7	6.3	533.4	73.1	16	795.0
20"	984.2	177.8	831.8	6.3	584.2	79.2	16	1030.0
24"	1168.4	203.2	990.6	6.3	692.1	91.9	16	1650.0

30" and 36" also available.  
Contact the sales team for more information.

# Welding Neck Flanges

## 150 Lb



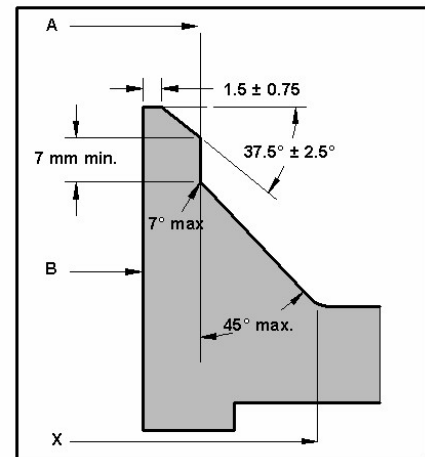
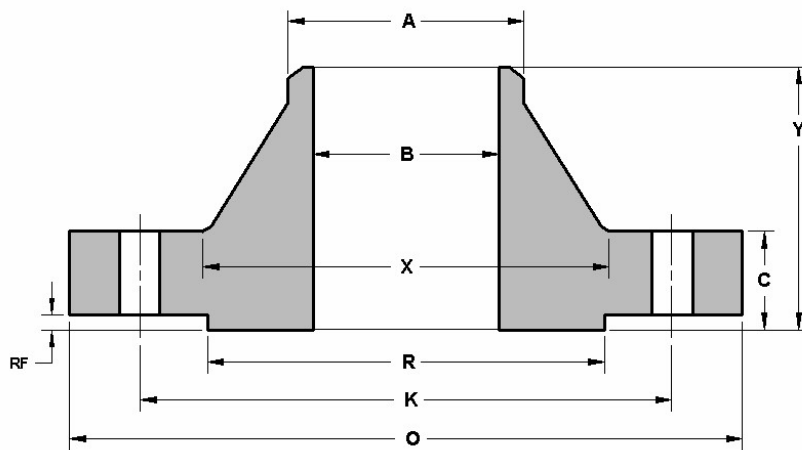
Dimensions are in mm

DN	O	C	X	A	K	Y	RF	R	B	Ø HOLES	NO. HOLES	Kg. APPROX
1/2	88.9	11.1	30.2	21.3	60.4	47.7	1.5	35.0	As per requested schedule.	15.7	4	0.5
3/4	98.5	12.7	38.1	26.6	69.8	52.3	1.5	42.9		15.7	4	0.7
1"	107.9	14.2	49.2	33.5	79.2	55.6	1.5	50.8		15.7	4	1.1
1" 1/4	117.3	15.7	58.6	42.1	88.9	57.1	1.5	63.5		15.7	4	1.5
1" 1/2	127.0	17.5	65.0	48.2	98.5	61.9	1.5	73.1		15.7	4	1.8
2"	152.4	19.0	77.7	60.4	120.6	63.5	1.5	91.9		19.0	4	2.7
2" 1/2	177.8	22.3	90.4	73.1	139.7	69.8	1.5	104.6		19.0	4	4.4
3"	190.5	23.8	107.9	88.9	152.4	69.8	1.5	127.0		19.0	4	5.2
4"	228.6	23.8	134.8	114.3	190.5	76.2	1.5	157.2		19.0	8	7.5
5"	254.0	23.8	163.5	141.2	215.9	88.9	1.5	185.6		22.3	8	9.2
6"	279.4	25.4	192.0	168.4	241.3	88.9	1.5	215.9		22.3	8	11.0
8"	342.9	28.4	246.1	219.2	298.4	101.6	1.5	269.7		22.3	8	18.3
10"	406.4	30.2	304.8	273.0	361.9	101.6	1.5	323.8		25.4	12	25.0
12"	482.6	31.7	365.2	323.8	431.8	114.3	1.5	381.0		25.4	12	39.0
14"	533.4	35.0	400.0	355.6	476.2	127.0	1.5	412.7		28.4	12	51.0
16"	596.9	36.5	457.2	406.4	539.7	127.0	1.5	469.9		28.4	16	60.0
18"	635.0	39.6	504.9	457.2	577.8	139.7	1.5	533.4		31.7	16	71.0
20"	698.5	42.9	558.8	508.0	635.0	144.5	1.5	584.2		31.7	20	88.0
24"	812.8	47.7	663.4	609.6	749.3	152.4	1.5	692.1		35.0	20	119.0

30" and 36" also available.  
Contact the sales team for more information.

# Welding Neck Flanges

## 300 Lb



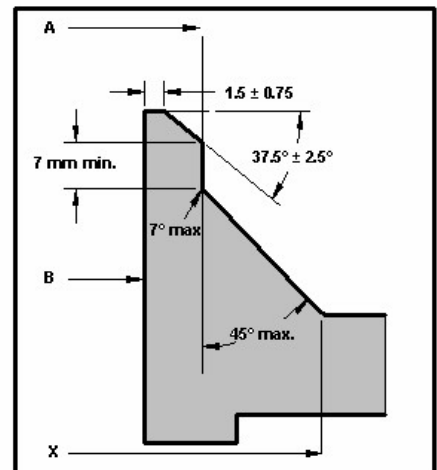
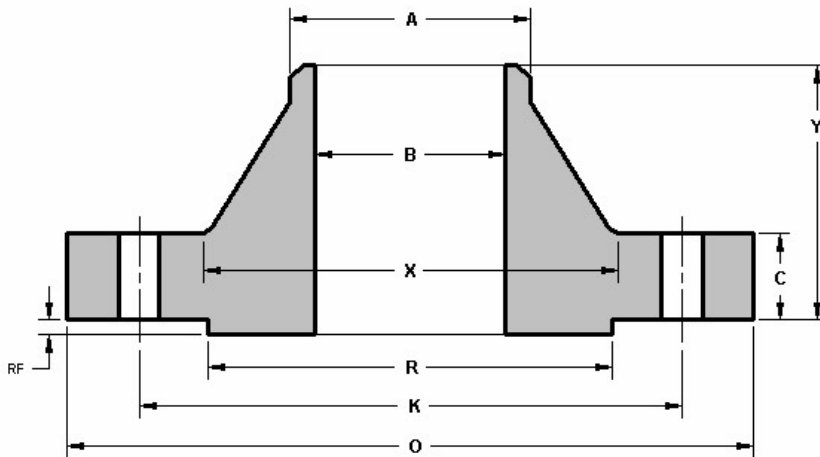
Dimensions are in mm.

DN	O	C	X	A	K	Y	RF	R	B	Ø HOLES	N. HOLES	Kg. APPROX
1/2	95.2	14.2	38.1	21.3	66.5	52.3	1.5	35.0	As per requested schedule.	15.7	4	0.9
3/4	117.3	15.7	47.7	26.6	82.5	57.1	1.5	42.9		19.0	4	1.5
1"	123.9	17.5	53.8	33.5	88.9	61.9	1.5	50.8		19.0	4	1.9
1"1/4	133.3	19.0	63.5	42.1	98.5	65.0	1.5	63.5		19.0	4	2.6
1"1/2	155.4	20.5	69.8	48.2	114.3	68.3	1.5	73.1		22.3	4	3.3
2"	165.1	22.3	84.0	60.4	127.0	69.8	1.5	91.9		19.0	8	3.6
2"1/2	190.5	25.4	100.0	73.1	149.3	76.2	1.5	104.6		22.3	8	5.4
3"	209.5	28.4	117.3	88.9	168.1	79.2	1.5	127.0		22.3	8	7.4
4"	254.0	31.7	146.0	114.3	200.1	85.8	1.5	157.2		22.3	8	11.9
5"	279.4	35.0	177.8	141.2	234.9	98.5	1.5	185.6		22.3	8	16.0
6"	317.5	36.5	206.2	168.4	269.7	98.5	1.5	215.9		22.3	12	20.2
8"	381.0	41.1	260.3	219.2	330.2	111.2	1.5	269.7		25.4	12	31.0
10"	444.5	47.7	320.5	273.0	387.3	117.3	1.5	323.8		28.4	16	44.3
12"	520.7	50.8	374.6	323.8	450.8	130.0	1.5	381.0		31.7	16	64.0
14"	584.2	53.8	425.4	355.6	514.3	142.7	1.5	412.7		31.7	20	88.0
16"	647.7	57.1	482.6	406.4	571.5	146.0	1.5	469.9		35.0	20	113.0
18"	711.2	60.4	533.4	457.2	628.6	158.7	1.5	533.4		35.0	24	134.0
20"	774.7	63.5	587.2	508.0	685.8	162.0	1.5	584.2		35.0	24	171.0
24"	914.4	69.8	701.5	609.6	812.8	168.1	1.5	692.1		41.1	24	238.0

30" and 36" also available.  
Contact the sales team for more information.

# Welding Neck Flanges

## 600 Lb



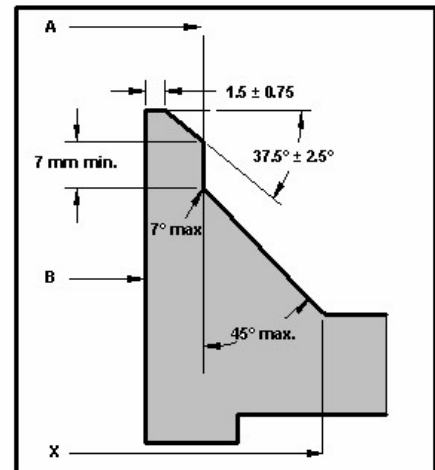
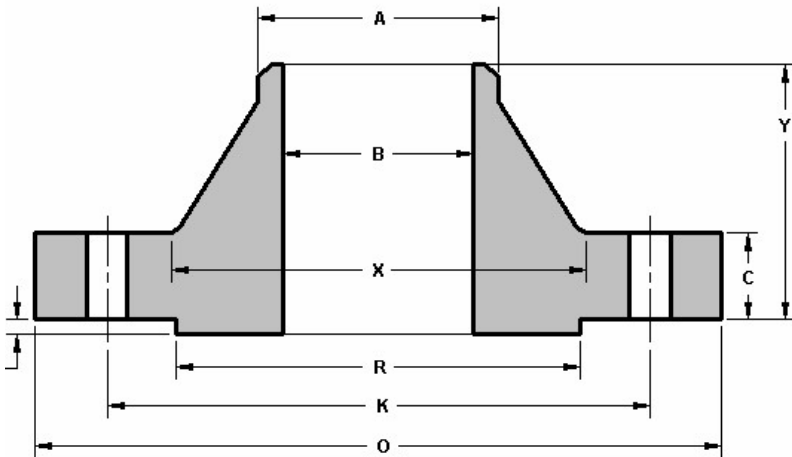
Dimensions are in mm.

DN	O	C	X	A	K	Y	RF	R	B	Ø HOLES	NO. HOLES	Kg. APPROX
1/2	95.2	14.2	38.1	21.3	66.5	52.3	6.3	35.0	As per requested schedule.	15.7	4	0.9
3/4	117.3	15.7	47.7	26.6	82.5	57.1	6.3	42.9		19.0	4	1.5
1"	123.9	17.5	53.8	33.5	88.9	61.9	6.3	50.8		19.0	4	1.9
1 1/4"	133.3	20.5	63.5	42.1	98.5	66.5	6.3	63.5		19.0	4	2.6
1 1/2"	155.4	22.3	69.8	48.2	114.3	69.8	6.3	73.1		22.3	4	3.3
2"	165.1	25.4	84.0	60.4	127.0	73.1	6.3	91.9		19.0	8	4.7
2 1/2"	190.5	28.4	100.0	73.1	149.3	79.2	6.3	104.6		22.3	8	6.5
3"	209.5	31.7	117.3	88.9	168.1	82.5	6.3	127.0		22.3	8	8.7
4"	273.0	38.1	152.4	114.3	215.9	101.6	6.3	157.2		25.4	8	18.1
5"	330.2	44.4	188.9	141.2	266.7	114.3	6.3	185.6		28.4	8	30.5
6"	355.6	47.7	222.2	168.4	292.1	117.3	6.3	215.9		28.4	12	36.2
8"	419.1	55.6	273.0	219.2	349.2	133.3	6.3	269.7		31.7	12	56.5
10"	508.0	63.5	342.9	273.0	431.8	152.4	6.3	323.8		35.0	16	91.0
12"	558.8	66.5	400.0	323.8	488.9	155.4	6.3	381.0		35.0	20	105.0
14"	603.2	69.8	431.8	355.6	527.0	165.1	6.3	412.7		38.1	20	127.0
16"	685.8	76.2	495.3	406.4	603.2	177.8	6.3	469.9		41.1	20	178.0
18"	742.9	82.5	546.1	457.2	654.0	184.1	6.3	533.4		44.4	20	216.0
20"	812.8	88.9	609.6	508.0	723.9	190.5	6.3	584.2		44.4	24	268.0
24"	939.8	101.6	717.5	609.6	838.2	203.2	6.3	692.1		50.8	24	380.0

**30" and 36" also available.**  
**Contact the sales team for more information.**

# Welding Neck Flanges

## 900 Lb



Dimensions are in mm.

DN	O	C	X	A	K	Y	RF	R	B	Ø HOLES	NO. HOLES	Kg. APPROX
1/2												
3/4												
1"												
1 1/4"												
1 1/2"												
2"												
2 1/2"												
3"	241.3	38.1	127.0	88.9	190.5	101.6	6.3	127.0		25.4	8	15.0
4"	292.1	44.4	158.7	114.3	234.9	114.3	6.3	157.2		31.7	8	24.0
5"	349.2	50.8	190.5	141.2	279.4	127.0	6.3	185.6		35.0	8	37.0
6"	381.0	55.6	234.9	168.4	317.5	139.7	6.3	215.9		31.7	12	50.0
8"	469.9	63.5	298.4	219.2	393.7	162.0	6.3	269.7		38.1	12	85.0
10"	546.1	69.8	368.3	273.0	469.9	184.1	6.3	323.8		38.1	16	127.0
12"	609.6	79.2	419.1	323.8	533.4	200.1	6.3	381.0		38.1	20	170.0
14"	641.3	85.8	450.8	355.6	558.8	212.8	6.3	412.7		41.1	20	198.0
16"	704.8	88.9	508.0	406.4	615.9	215.9	6.3	469.9		44.4	20	224.0
18"	787.4	101.6	565.1	457.2	685.8	228.6	6.3	533.4		50.8	20	300.0
20"	857.2	107.9	622.3	508.0	749.3	247.6	6.3	584.2		53.8	20	374.0
24"	1041.4	139.7	749.3	609.6	901.7	292.1	6.3	692.1		66.5	20	680.0

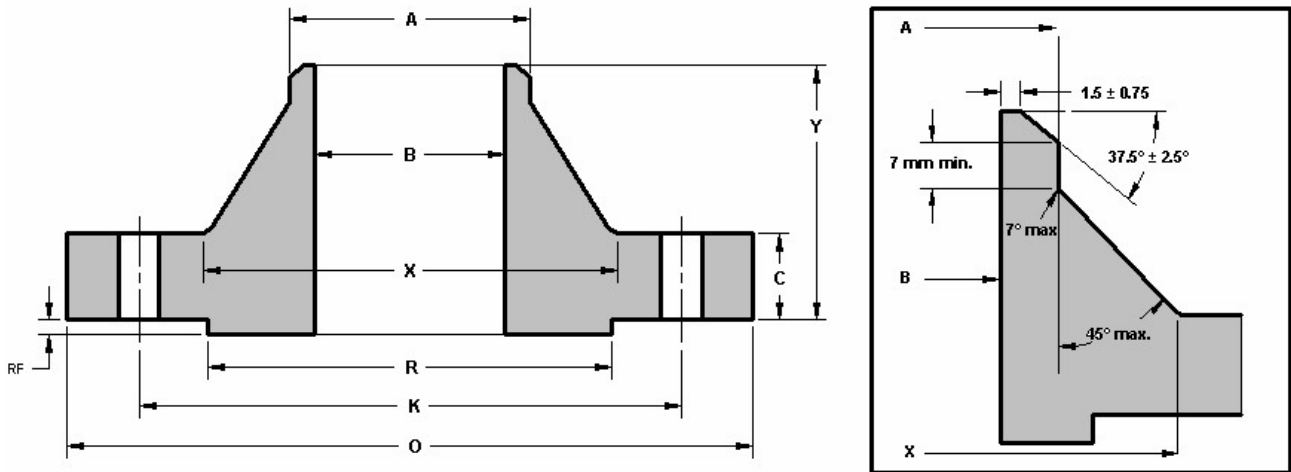
Use 1500 Lbs dimensions for these sizes.

As per requested schedule.

30" and 36" also available.  
Contact the sales team for more information.

# Welding Neck Flanges

## 1500 Lb



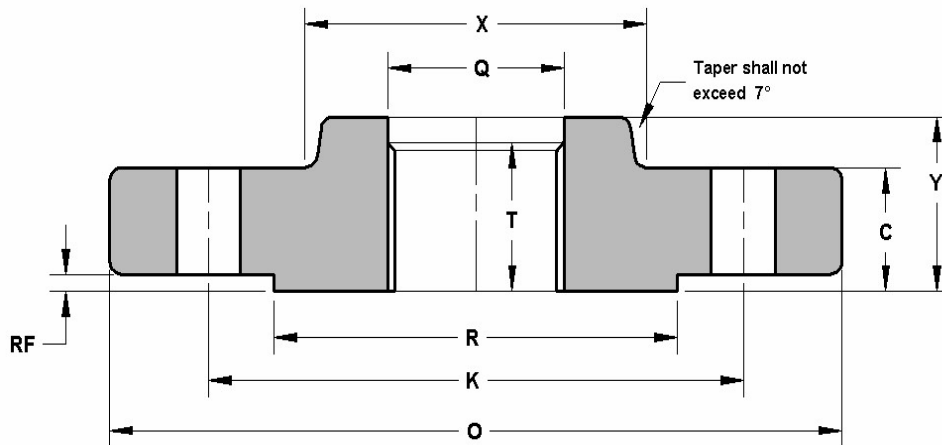
Dimensions are in mm

DN	O	C	X	A	K	Y	RF	R	B	Ø HOLES	NO. HOLES	Kg. APPROX
1/2	120.6	22.3	38.1	21.3	82.5	60.4	6.3	35.0	As per requested schedule.	22.3	4	1.9
3/4	130.0	25.4	44.4	26.6	88.9	69.8	6.3	42.9		22.3	4	2.6
1"	149.3	28.4	52.3	33.5	101.6	73.1	6.3	50.8		25.4	4	3.8
1 1/4"	158.7	28.4	63.5	42.1	111.2	73.1	6.3	63.5		25.4	4	4.4
1 1/2"	177.8	31.7	69.8	48.2	123.9	82.5	6.3	73.1		28.4	4	6.1
2"	215.9	38.1	104.6	60.4	165.1	101.6	6.3	91.9		25.4	8	11.1
2 1/2"	244.3	41.1	123.9	73.1	190.5	104.6	6.3	104.6		28.4	8	15.5
3"	266.7	47.7	133.3	88.9	203.2	117.3	6.3	127.0		31.7	8	20.4
4"	311.1	53.8	162.0	114.3	241.3	123.9	6.3	157.2		35.0	8	30.5
5"	374.6	73.1	196.8	141.2	292.1	155.4	6.3	185.6		41.1	8	58.0
6"	393.7	82.5	228.6	168.4	317.5	171.4	6.3	215.9		38.1	12	70.0
8"	482.6	91.9	292.1	219.2	393.7	212.8	6.3	269.7		44.4	12	125.0
10"	584.2	107.9	368.3	273.0	482.6	254.0	6.3	323.8		50.8	12	204.0
12"	673.1	123.9	450.8	323.8	571.5	282.4	6.3	381.0		53.8	16	303.0
14"	749.3	133.3	495.3	355.6	635.0	298.4	6.3	412.7		60.4	16	427.0
16"	825.5	146.0	552.4	406.4	704.8	311.1	6.3	469.9		66.5	16	570.0
18"	914.4	162.0	596.9	457.2	774.7	327.1	6.3	533.4		73.1	16	740.0
20"	984.2	177.8	641.3	508.0	831.8	355.6	6.3	584.2		79.2	16	935.0
24"	1168.4	203.2	762.0	609.6	990.6	406.4	6.3	692.1		91.9	16	1515.0

30" and 36" also available.  
Contact the sales team for more information.

# Screwed Flanges

## 150 Lb



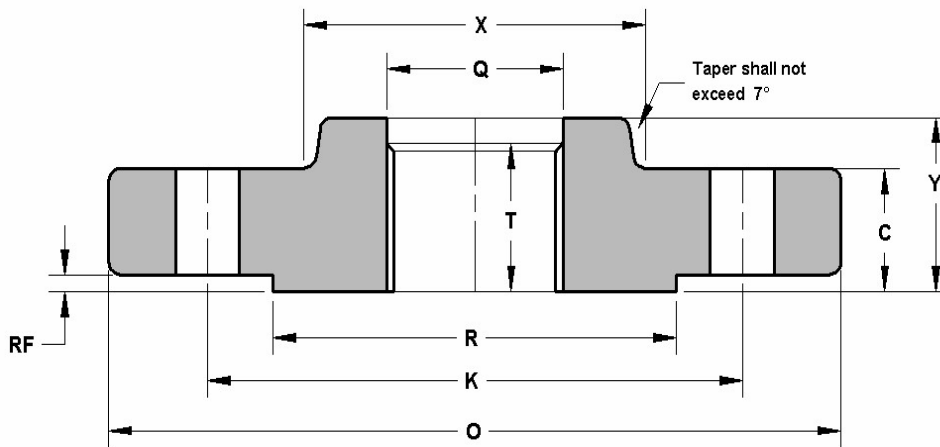
Dimensions are in mm.

DN	O	C	X	K	Y	RF	R	Q	T	Ø HOLES	NO. HOLES	Kg. APPROX
1/2	88.9	11.1	30.2	60.4	15.7	1.5	35.0		15.7	15.7	4	0.4
3/4	98.5	12.7	38.1	69.8	15.7	1.5	42.9		15.7	15.7	4	0.7
1"	107.9	14.2	49.2	79.2	17.5	1.5	50.8		17.5	15.7	4	0.9
1"1/4	117.3	15.7	58.6	88.9	20.5	1.5	63.5		20.5	15.7	4	1.2
1"1/2	127.0	17.5	65.0	98.5	22.3	1.5	73.1		22.3	15.7	4	1.5
2"	152.4	19.0	77.7	120.6	25.4	1.5	91.9		25.4	19.0	4	2.3
2"1/2	177.8	22.3	90.4	139.7	28.4	1.5	104.6		28.4	19.0	4	3.7
3"	190.5	23.8	107.9	152.4	30.2	1.5	127.0		30.2	19.0	4	4.2
4"	228.6	23.8	134.8	190.5	33.2	1.5	157.2		33.2	19.0	8	5.9
5"	254.0	23.8	163.5	215.9	36.5	1.5	185.6		36.5	22.3	8	7.0
6"	279.4	25.4	192.0	241.3	39.6	1.5	215.9		39.6	22.3	8	8.4
8"	342.9	28.4	246.1	298.4	44.4	1.5	269.7		44.4	22.3	8	13.0
10"	406.4	30.2	304.8	361.9	49.2	1.5	323.8		49.2	25.4	12	17.8
12"	482.6	31.7	365.2	431.8	55.6	1.5	381.0		55.6	25.4	12	29.5
14"	533.4	35.0	400.0	476.2	57.1	1.5	412.7		57.1	28.4	12	39.0
16"	596.9	36.5	457.2	539.7	63.5	1.5	469.9		63.5	28.4	16	42.0
18"	635.0	39.6	504.9	577.8	68.3	1.5	533.4		68.3	31.7	16	54.0
20"	698.5	42.9	558.8	635.0	73.1	1.5	584.2		73.1	31.7	20	68.0
24"	812.8	47.7	663.4	749.3	82.5	1.5	692.1		82.5	35.0	20	93.0

Available in NPT, BSPP or BSPT

# Screwed Flanges

## 300 Lb



Dimensions are in mm.

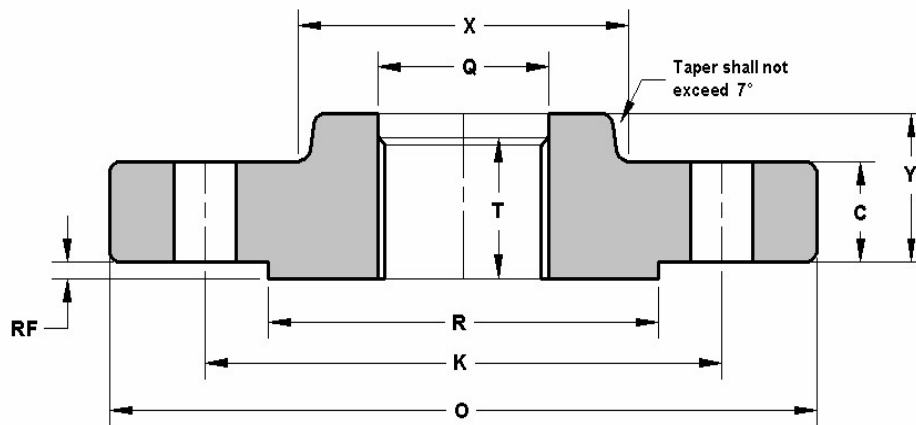
DN	O	C	X	K	Y	RF	R	Q	T	Ø HOLES	N. HOLES	Kg. APPROX
1/2	95.2	14.2	38.1	66.5	22.3	1.5	35.0	23.6	15.7	15.7	4	0.7
3/4	117.3	15.7	47.7	82.5	25.4	1.5	42.9	28.9	15.7	19.0	4	1.2
1"	123.9	17.5	53.8	88.9	26.9	1.5	50.8	35.8	17.5	19.0	4	1.4
1"1/4	133.3	19.0	63.5	98.5	26.9	1.5	63.5	44.4	20.5	19.0	4	1.9
1"1/2	155.4	20.5	69.8	114.3	30.2	1.5	73.1	50.5	22.3	22.3	4	2.8
2"	165.1	22.3	84.0	127.0	33.2	1.5	91.9	63.5	28.4	19.0	8	3.3
2"1/2	190.5	25.4	100.0	149.3	38.1	1.5	104.6	76.2	31.7	22.3	8	4.6
3"	209.5	28.4	117.3	168.1	42.9	1.5	127.0	92.2	31.7	22.3	8	6.3
4"	254.0	31.7	146.0	200.1	47.7	1.5	157.2	117.6	36.5	22.3	8	10.2
5"	279.4	35.0	177.8	234.9	50.8	1.5	185.6	144.5	42.9	22.3	8	12.9
6"	317.5	36.5	206.2	269.7	52.3	1.5	215.9	171.4	45.9	22.3	12	18.0
8"	381.0	41.1	260.3	330.2	61.9	1.5	269.7	222.2	50.8	25.4	12	26.0
10"	444.5	47.7	320.5	387.3	66.5	1.5	323.8	276.3	55.6	28.4	16	37.5
12"	520.7	50.8	374.6	450.8	73.1	1.5	381.0	328.6	60.4	31.7	16	52.0
14"	584.2	53.8	425.4	514.3	76.2	1.5	412.7	360.4	63.5	31.7	20	72.0
16"	647.7	57.1	482.6	571.5	82.5	1.5	469.9	411.2	68.3	35.0	20	100.0
18"	711.2	60.4	533.4	628.6	88.9	1.5	533.4	462.0	69.8	35.0	24	126.0
20"	774.7	63.5	587.2	685.8	95.2	1.5	584.2	512.8	73.1	35.0	24	148.0
24"	914.4	69.8	701.5	812.8	106.4	1.5	692.1	614.4	82.5	41.1	24	222.0

Available in NPT, BSPP or BSPT



# Screwed Flanges

## 600 Lb



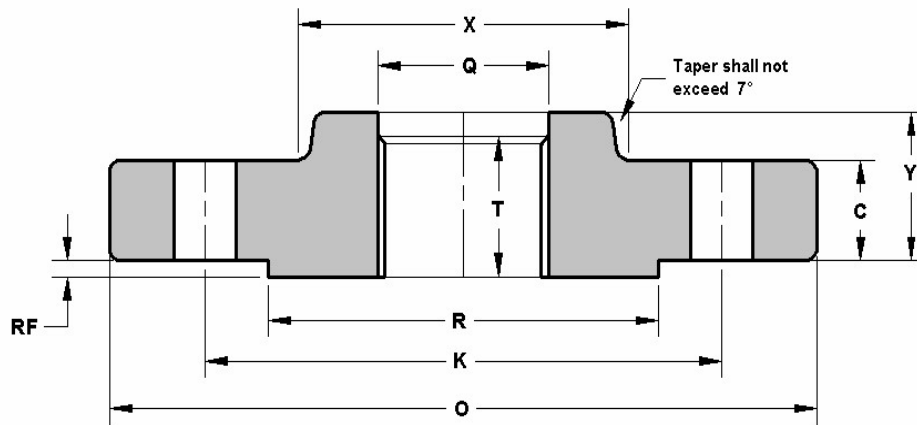
Dimensions are in mm

DN	O	C	X	K	Y	RF	R	Q	T	Ø HOLES	NO. HOLES	Kg. APPROX
1/2	95.2	14.2	38.1	66.5	22.3	6.3	35.0	23.6	15.7	15.7	4	1.0
3/4	117.3	15.7	47.7	82.5	25.4	6.3	42.9	28.9	15.7	19.0	4	1.6
1"	123.9	17.5	53.8	88.9	26.9	6.3	50.8	35.8	17.5	19.0	4	1.8
1 1/4"	133.3	20.5	63.5	98.5	28.4	6.3	63.5	44.4	20.5	19.0	4	2.6
1 1/2"	155.4	22.3	69.8	114.3	31.7	6.3	73.1	50.5	22.3	22.3	4	3.3
2"	165.1	25.4	84.0	127.0	36.5	6.3	91.9	63.5	28.4	19.0	8	3.9
2 1/2"	190.5	28.4	100.0	149.3	41.1	6.3	104.6	76.2	31.7	22.3	8	6.0
3"	209.5	31.7	117.3	168.1	45.9	6.3	127.0	92.2	35.0	22.3	8	7.4
4"	273.0	38.1	152.4	215.9	53.8	6.3	157.2	117.6	41.1	25.4	8	17.0
5"	330.2	44.4	188.9	266.7	60.4	6.3	185.6	144.5	47.7	28.4	8	26.5
6"	355.6	47.7	222.2	292.1	66.5	6.3	215.9	171.4	50.8	28.4	12	32.0
8"	419.1	55.6	273.0	349.2	76.2	6.3	269.7	222.2	57.1	31.7	12	46.0
10"	508.0	63.5	342.9	431.8	85.8	6.3	323.8	276.3	65.0	35.0	16	74.0
12"	558.8	66.5	400.0	488.9	91.9	6.3	381.0	328.6	69.8	35.0	20	90.0
14"	603.2	69.8	431.8	527.0	93.7	6.3	412.7	360.4	73.1	38.1	20	108.0
16"	685.8	76.2	495.3	603.2	106.4	6.3	469.9	411.2	77.7	41.1	20	150.0
18"	742.9	82.5	546.1	654.0	117.3	6.3	533.4	462.0	79.2	44.4	20	188.0
20"	812.8	88.9	609.6	723.9	127.0	6.3	584.2	512.8	82.5	44.4	24	230.0
24"	939.8	101.6	717.5	838.2	139.7	6.3	692.1	614.4	91.9	50.8	24	325.0

Available in NPT, BSPP or BSPT

# Screwed Flanges

## 900 Lb



Dimensions are in mm.

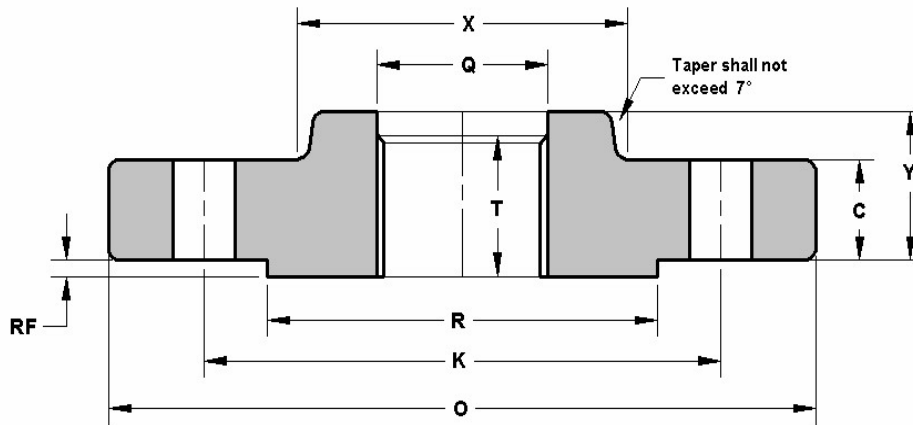
DN	O	C	X	K	Y	RF	R	Q	T	Ø HOLES	NO. HOLES	Kg. APPROX
1/2												
3/4												
1"												
1 1/4"												
1 1/2"												
2"												
2 1/2"												
3"	241.3	38.1	127.0	190.5	53.8	6.3	127.0	92.2	41.1	25.4	8	11.9
4"	292.1	44.4	158.7	234.9	69.8	6.3	157.2	117.6	47.7	31.7	8	20.0
5"	349.2	50.8	190.5	279.4	79.2	6.3	185.6	144.5	53.8	35.0	8	32.5
6"	381.0	55.6	234.9	317.5	85.8	6.3	215.9	171.4	57.1	31.7	12	41.7
8"	469.9	63.5	298.4	393.7	101.6	6.3	269.7	222.2	63.5	38.1	12	77.5
10"	546.1	69.8	368.3	469.9	107.9	6.3	323.8	276.3	71.3	38.1	16	110.0
12"	609.6	79.2	419.1	533.4	117.3	6.3	381.0	328.6	76.2	38.1	20	149.0
14"	641.3	85.8	450.8	558.8	130.0	6.3	412.7	360.4	82.5	41.1	20	181.0
16"	704.8	88.9	508.0	615.9	133.3	6.3	469.9	411.2	85.8	44.4	20	194.0
18"	787.4	101.6	565.1	685.8	152.4	6.3	533.4	462.0	88.9	50.8	20	274.0
20"	857.2	107.9	622.3	749.3	158.7	6.3	584.2	512.8	91.9	53.8	20	332.0
24"	1041.4	139.7	749.3	901.7	203.2	6.3	692.1	614.4	101.6	66.5	20	637.0

Use 1500 Lbs dimensions for these sizes.

Available in NPT, BSPP or BSPT

# Screwed Flanges

## 1500 Lb

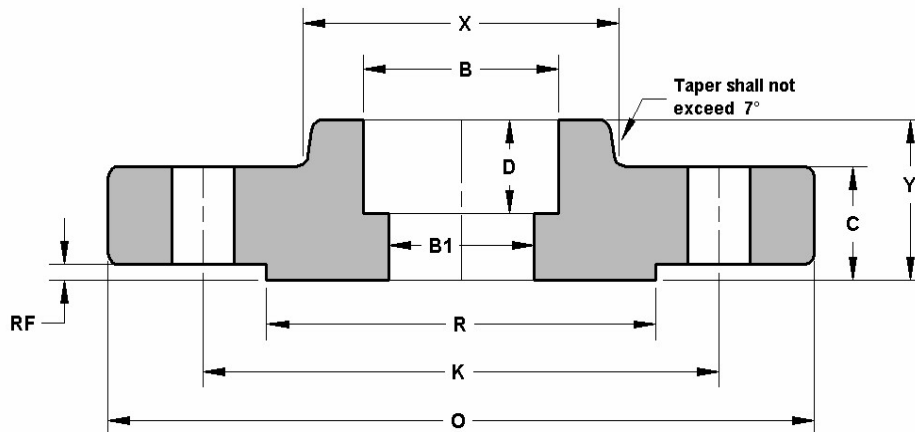


Dimensions are in mm.

DN	O	C	X	K	Y	RF	R	Q	T	Ø HOLES	NO - HOLES	Kg. APPROX
1/2	120.6	22.3	38.1	82.5	31.7	6.3	35.0	23.6	22.3	22.3	4	1.7
3/4	130.0	25.4	44.4	88.9	35.0	6.3	42.9	28.9	25.4	22.3	4	2.4
1"	149.3	28.4	52.3	101.6	41.1	6.3	50.8	35.8	28.4	25.4	4	3.5
1"1/4	158.7	28.4	63.5	111.2	41.1	6.3	63.5	44.4	30.2	25.4	4	4.0
1"1/2	177.8	31.7	69.8	123.9	44.4	6.3	73.1	50.5	31.7	28.4	4	5.5
2"	215.9	38.1	104.6	165.1	57.1	6.3	91.9	63.5	38.1	25.4	8	10.0
2"1/2	244.3	41.1	123.9	190.5	63.5	6.3	104.6	76.2	47.7	28.4	8	13.9

Available in NPT, BSPP or BSPT

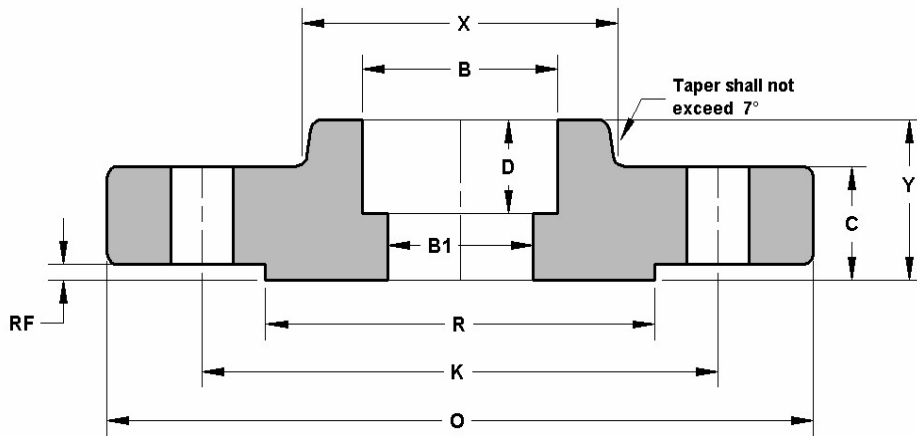
# Socket Weld Flanges 150Lb



Dimensions are in mm.

DN	O	C	X	K	Y	RF	R	B	B1	D	Ø HOLES	NO. HOLES	Kg. APPROX
1/2	88.9	11.1	30.2	60.4	15.7	1.5	35.0	22.3	As per requested schedule.	9.6	15.7	4	0.4
3/4	98.5	12.7	38.1	69.8	15.7	1.5	42.9	27.6		11.1	15.7	4	0.7
1"	107.9	14.2	49.2	79.2	17.5	1.5	50.8	34.5		12.7	15.7	4	0.8
1"1/4	117.3	15.7	58.6	88.9	20.5	1.5	63.5	43.1		14.2	15.7	4	1.1
1"1/2	127.0	17.5	65.0	98.5	22.3	1.5	73.1	49.5		15.7	15.7	4	1.4
2"	152.4	19.0	77.7	120.6	25.4	1.5	91.9	61.9		17.5	19.0	4	2.2
2"1/2	177.8	22.3	90.4	139.7	28.4	1.5	104.6	74.6		19.0	19.0	4	3.6
3"	190.5	23.8	107.9	152.4	30.2	1.5	127.0	90.6		20.5	19.0	4	4.1
4"	228.6	23.8	158.7	234.9	33.3	1.5	157.2	139.3		25.4	19.0	8	4.6
6"	279.4	23.8	224.9	276.3	36.5	1.5	215.9	157.5	28.6	22.2	8	5.4	

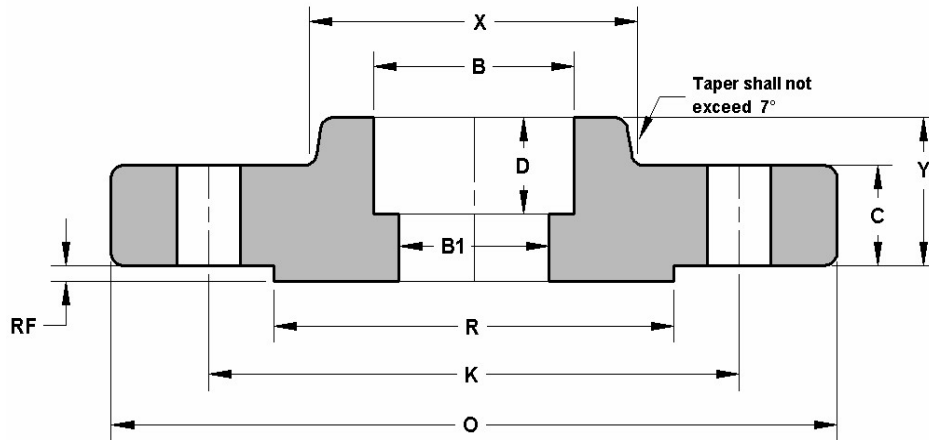
# Socket Weld Flanges 300Lb



Dimensions are in mm.

DN	O	C	X	K	Y	RF	R	B	B1	D	Ø HOLES	NO. HOLES	Kg. APPROX
1/2	95.2	14.2	38.1	66.5	22.3	1.5	35.0	22.3	As per requested schedule.	9.6	15.7	4	0.7
3/4	117.3	15.7	47.7	82.5	25.4	1.5	42.9	27.6		11.1	19.0	4	1.2
1"	123.9	17.5	53.8	88.9	26.9	1.5	50.8	34.5		12.7	19.0	4	1.4
1"1/4	133.3	19.0	63.5	98.5	26.9	1.5	63.5	43.1		14.2	19.0	4	1.9
1"1/2	155.4	20.5	69.8	114.3	30.2	1.5	73.1	49.5		15.7	22.3	4	2.8
2"	165.1	22.3	84.0	127.0	33.2	1.5	91.9	61.9		17.5	19.0	8	3.3
2"1/2	190.5	25.4	100.0	149.3	38.1	1.5	104.6	74.6		19.0	22.3	8	4.6
3"	209.5	28.4	117.3	168.1	42.9	1.5	127.0	90.6		20.5	22.3	8	6.3

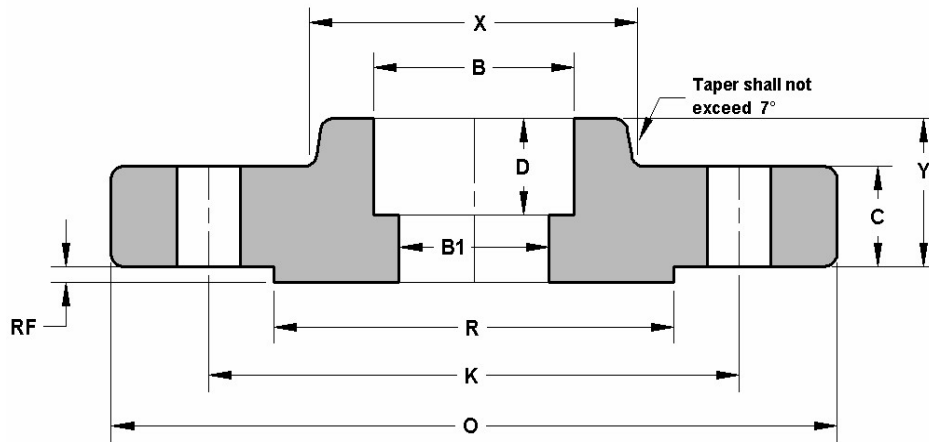
# Socket Weld Flanges 600Lb



Dimensions are in mm.

DN	O	C	X	K	Y	RF	R	B	B1	D	Ø HOLES	NO . HOLES	Kg. APPROX
1/2	95.2	14.2	38.1	66.5	22.3	6.3	35.0	22.3	As per requested schedule.	9.6	15.7	4	1.0
3/4	117.3	15.7	47.7	82.5	25.4	6.3	42.9	27.6		11.1	19.0	4	1.6
1"	123.9	17.5	53.8	88.9	26.9	6.3	50.8	34.5		12.7	19.0	4	1.8
1"1/4	133.3	20.5	63.5	98.5	28.4	6.3	63.5	43.1		14.2	19.0	4	2.6
1"1/2	155.4	22.3	69.8	114.3	31.7	6.3	73.1	49.5		15.7	22.3	4	3.3
2"	165.1	25.4	84.0	127.0	36.5	6.3	91.9	61.9		17.5	19.0	8	3.9
2"1/2	190.5	28.4	100.0	149.3	41.1	6.3	104.6	74.6		19.0	22.3	8	6.0
3"	209.5	31.7	117.3	168.1	45.9	6.3	127.0	90.6		20.5	22.3	8	7.4

# Socket Weld Flanges 1500Lb



Dimensions are in mm.

DN	O	C	X	K	Y	RF	R	B	B1	D	Ø HOLES	NO. HOLES	Kg. APPROX
1/2	120.6	22.3	38.1	82.5	31.7	6.3	35.0	22.3	As per requested schedule.	9.6	22.3	4	1.7
3/4	130.0	25.4	44.4	88.9	35.0	6.3	42.9	27.6		11.1	22.3	4	2.4
1"	149.3	28.4	52.3	101.6	41.1	6.3	50.8	34.5		12.7	25.4	4	3.5
1"1/4	158.7	28.4	63.5	111.2	41.1	6.3	63.5	43.1		14.2	25.4	4	4.0
1"1/2	177.8	31.7	69.8	123.9	44.4	6.3	73.1	49.5		15.7	28.4	4	5.5
2"	215.9	38.1	104.6	165.1	57.1	6.3	91.9	61.9		17.5	25.4	8	10.0
2"1/2	244.3	41.1	123.9	190.5	63.5	6.3	104.6	74.6		19.0	28.4	8	13.9
3"	266.7	47.7	133.3	203.2		6.3	127.0				31.7	8	